

Maintenance and repair

Maintenance and repair of electrical devices have to be done only by skilled electricians.

Defective lamp:

The light is equipped with a light emitting diode (LED). The useful life of LEDs surpasses by far that of other conventional lamps (e.g. light bulbs). Therefore a lamp replacement is seldom necessary. If the LED fails nevertheless, the light has to be checked by the manufacturer and eventually repaired. Please send the complete lamp to the manufacturer.

Care

ATTENTION Risk of damage caused by wrong care:

Clean the transparent cover regularly. Cleaning of the lamp parts only with a cloth with standard household cleaning agent. Please make sure that the used agents are compatible with paints and plastics. Wrong care may destroy the device.

Disposal

ATTENTION Environmental hazard:

At the end of its useful life dispose of the device by using the available recycling systems. Wrong disposal endangers our environment.



TRANSPORT PACKAGING::
Cardboard carton and PE foil



For disposal of the packaging please use the available recycling systems.

Abbreviations, symbols, explanations



Safety instructions and warnings



Important information



CE conformity mark



Device corresponds to protection class III
(operation with safety extra low voltage SELV)



Functional earth



Observe the disposal instructions



Observe the disposal instructions

Instructions for mounting and use elitra machine light MLe Compact



You purchased an elitra LED machine light.

Thank you for your trust in us.

We hope that our product will meet your expectations.

Please read these instructions carefully before mounting and using the light.

Observe the safety and warning instructions without fail.

Safety and warning instructions

The elitra LED machine light MLe Compact is a light for mounting on machines.

A non-intended use may endanger health and life.

The device must only be used under the following conditions:

- not in hazardous areas
- not in the range of action of high-performance lasers
- maximum ambient temperature 50°C
- connect only to suitable safety extra-low voltage according to rating plate data
- connection, maintenance and repair only by skilled electrician
- suitable for wet locations
- suitable for continuous operation



DANGER Risk of explosion:

Only operate the light in non-hazardous areas. An operation in hazardous areas can trigger an explosion.



DANGER Hazard by wrong mounting or handling:

Observe the warning and hints on the device and in the instructions. Read first all attached instructions and other information. Wrong mounting or handling of the device can endanger health and life.



WARNING Hazard of electrical shock upon contact:

Before carrying out any maintenance or repair work disconnect the light from the mains. Maintenance and repair work only by skilled electrician. Use only parts released by the manufacturer as spare parts. Improperly executed maintenance and repair may result in serious injuries or death.

ATTENTION Damage caused by wrong mains voltage:

Connection only by skilled electrician. Operate devices of protection class III only with safety extra low voltage (SELV). Before putting into operation check that the connection voltage corresponds to the given rated voltage. A wrong connection voltage can result in damaging or destroying the lamp.



WARNING Risk of blinding:

Position the light in such a way that looking directly into the light source is avoided. Do not look directly into the light source. Looking directly into the light source can lead to temporarily impaired vision and after-images. This may result in irritations, inconveniences, impairments or accidents.

ATTENTION Damage caused by hitting laser beam:

Use the lamp only outside the range of action of high-performance lasers (e.g. laser for cutting or welding). A direct or indirect hit of the laser beam can destroy the LED.



elitra gmbh
Immenweg 2
33719 Bielefeld
Germany

Phone: +49 (0)521 / 30 45 750
Fax: +49 (0)521 / 30 45 753
<http://www.elitra.de>
info@elitra.de

ATTENTION Intended use:

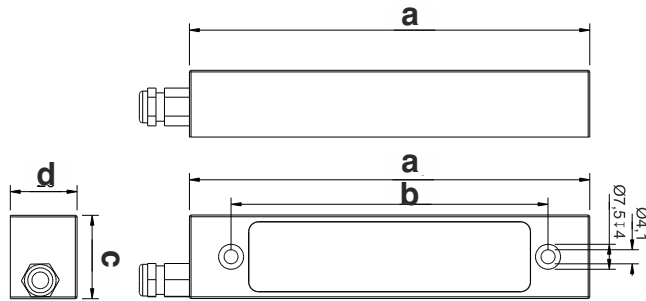
The manufacturer is not liable for damage caused by non-intended use or by non-observance of the safety instructions and warnings.

Further explanations of the safety instructions under abbreviations, symbols, explanations.

Mounting

The lamp is fixed with screws on the mounting surface. (screws not included in the scope of delivery)

For the required dimensions for the light please see the drawing and the corresponding table:



| Model | a | b | c | d |
|-----------------|--------|--------|-------|-------|
| MLe Compact | 120 mm | 95 mm | 25 mm | 20 mm |
| MLe Compact 320 | 320 mm | 300 mm | 25 mm | 20 mm |
| MLe Compact 460 | 460 mm | 440 mm | 25 mm | 20 mm |

i **Remarks:**

For special versions the drill pattern may differ from the standard drill pattern.

CAUTION Risk due to insufficient fastening:

Mounting only by skilled electrician. Mounting only on a flat surface suitable for mounting. Verify the reliability of mounting elements which have not been proposed by the manufacturer. The light must be mounted safely by means of suitable screws. When mounted incorrectly, the light may fall down.

Connection

Light with cable:

The light is supplied with free strand ends for the connection to safety extra low voltage (SELV).



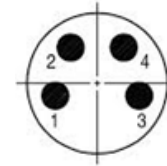
DC (-) white
DC (+) brown

i **Note for DC version:**

The light is protected against polarity reversal.

Light with M8 connector:

For lights with M8 connector a coupling has to be used for the connection which guarantees the compliance with the protection type.



Connection (4 pins), A-coded:

- 1 = DC (+)
- 2 = NC (not connected)
- 3 = DC (-)
- 4 = NC (not connected)

Description machine light MLe Compact

Our machine lights are based on the newest LED technology. They combine efficiency and profitability with a robust construction. The MLe Compact was developed for the use on machine tools and machining centers: for the basic lighting of the machine or for the illumination of the immediate machining area, depending upon the placement. A light with optic offers further application possibilities.

LEDs (light emitting diodes) have a high average service life. Fewer maintenance works lead to less machine downtimes. The anodised aluminium casing is watertight. In the version with tempered glass (ESG) the protection pane is insensitive to coolants, lubricants, hot and sharp-edged shavings. In each case and for other versions please ask.

Operation

Switching the lamp on and off:

As a standard the light has no built-in switch. It is switched on and off via external circuit elements or connectors.

Technical data

| | |
|--------------------------------------|----------------------|
| General: | |
| Protection class | III |
| Protection type | IP67 |
| Operating mode | continuous operation |
| Connection cable (for cable version) | approx. 3 m |
| Electrical values: | |
| Nominal voltage | 24 V DC |

| | Dimensions: | Power consumption: |
|-----------------|------------------|--------------------|
| MLe Compact | 120 x 25 x 20 mm | 4 Watts |
| MLe Compact 320 | 320 x 25 x 20 mm | 8 Watts |
| MLe Compact 460 | 460 x 25 x 20 mm | 12 Watts |

ATTENTION Risk of damage by deviation from standard version:

When required this series of devices will be extended by further versions. Technical data are therefore subject to modification. Please observe always the data and symbols on the rating plate.